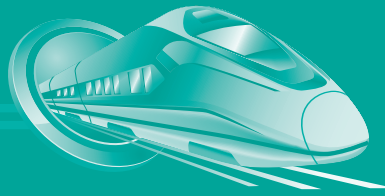


3rd Annual MODERN RAILWAYS



a **marcusevans** event

Mandarin Orchard Hotel, Singapore

29th – 31st May 2013

The Introduction of so **POWERFUL**
an agent as steam to a carriage on wheels
will make a **great change** in the situation of man

Thomas Jefferson



Capitalising on rail infrastructure development for sustainable mobility and attracting investments for a thriving economy.

Featuring Key Presentations From International Rail Operators:

Sim Wee Meng Group Director of Rail
Land Transport Authority, Singapore

Andrew Jakob Vice President – Customer Service
Aurizon
Formerly **QR National, Australia**

Enrico Trapazzo Vice Chairman
Egyptian National Railways

Ong Boon Ann Deputy Director of Rail
Land Transport Authority, Singapore

Simon D'Cruz Head of Network Systems
Ethihad Rail, UAE

David Kerr Chief Executive Officer
Toll Royal Railways, Cambodia

Arvind Bhatnagar Executive Director of Signalling
& Telecommunication
Delhi Metro, India

Tsun-Yung Chen Director General
Mass Rapid Transit Bureau, Taiwan

Belay File Assistant Assistant Professor in Urban Economics
Ethiopian Civil Service University
Former Director of Policy and Research
Ministry of Urban Development & Construction, Ethiopia

T.C. Chew Project Director
MTR Corporation, Hong Kong

Nigel Holness Operations Director
London Underground, United Kingdom

Claudio Cassarino Managing Director
Metro Service, Denmark

Ismail Said General Manager – Project Management
Keretapi Tanah Melayu (KTM) Berhad, Malaysia

Siyabonga Gama Chief Executive Officer
Transnet Freight Rail, South Africa

David Yam Head of International Business
MTR Corporation, Hong Kong

Alex Chang Chief Operating Officer
Taiwan High Speed Rail Corporation (THSRC)

Iwan Prijanto Head of Urban Planning &
Business Development
PT MRT Jakarta, Indonesia

Yitbarek Mengiste Director of Policy and Research
Ministry of Urban Development & Construction, Ethiopia

Ian Thoms Project Director
Klang-Valley MRT, Malaysia

Khairani Mohammad Group Director of Rail
Syarikat Prasarana Negara Berhad, Malaysia

Dr. Tsutomu Morimura Executive Vice President
Central Japan Railway Company

Ng Wai Yi Deputy Director of Rolling Stock
SMRT, Singapore

Sumit Srisantithum Operations Director
Bangkok Mass Transit System, Thailand

Agrawal Punit General Manager
Dedicated Freight Corridor Corporation, India

Bernard Abeiku Arthur Chief Executive Officer
Centre for Urban Transportation, Ghana

Mazeli Bin Salimi Chief Engineer
SMRT, Singapore

Dr Kenji Sato Head of Overseas High Speed Railway Project
Central Japan Railway Company

Featuring International Expert Presentations and Case Studies:

Azmi Abdul Aziz Chief Development Officer
SPAD, Malaysia

Dr Pichet Kunadhamrak Chief of Intercity
Transport Development
Ministry of Transport, Thailand

Derek Yang Director of South-East Asia
HIK Vision, China

Vincent Hong Government Solutions Representative
Panasonic Systems Asia Pacific

Torsten Lerch Senior Sales Manager
Voith Turbo Pte Ltd, Singapore

Senior Representative
Hirschmann

Dr. Jia Wenzheng Director of Urban Rail Transit
Ministry of Transport, China

Jason Hutchings Director
Atkins Global, Hong Kong

Brian Middleton Senior Industry Solutions Director
Bentley Systems, Singapore

Ranbir Saran Das Managing Director
Fairwood Group, Singapore

Adam Ruddle Key Account Manager
Fairwood Group, Singapore

Len Pearson Executive Director
InterDynamics Pty. Ltd., Australia

Heruwisnu Owipowo Deputy Director of Railway Network
Ministry of Transportation, Indonesia

Nguyen Van Quoc Vice Chairman
Management Authority for Urban Railways (MAUR), Vietnam

Dr Spencer Dando Regional Director MEA
Nomad Digital Ltd, UAE

Jean-François de Lantsheere Deputy Managing Director
21 Nett, Belgium

Senior Representative
Thermo King, Australia

Featuring International Case Studies from:

- SMRT, Singapore • Land Transport Authority, Singapore • Klang Valley MRT, Malaysia • London Underground • Prasarana, Malaysia • SPAD, Malaysia • Keretapi Tanah Melayu (KTM), Malaysia
- Metro Service, Denmark • MTR, Hong Kong • Aurizon, Australia - Formerly QR National • Ethihad Rail, UAE • Atkins Global, Hong Kong • Bangkok Mass Transit System, Thailand
- Ministry of Transport, Indonesia • Delhi Metro, India • Management Authority for Urban Railways (MAUR), Vietnam • Ministry of Transport, China • Mass Rapid Transit Bureau, Taiwan
- PT MRT, Jakarta, Indonesia • Ministry of Urban Development and Construction, Ethiopia • Egyptian National Railways • Centre of Urban Transportation, Ghana

3rd Day Focusing Exclusively on Mainline:

- Taiwan High Speed Rail Corporation • Transnet Freight Rail, South Africa • PT BATR, Indonesia • RENFE, Spain • Central Japan Railway Company • Dedicated Freight Corridor Corporation, India
- Toll Royal Railways, Cambodia



large scale events

Join the **marcusevans**
Property / Infrastructure networking group
on Linked In today. Click here



www.modernrailways-lse.com

Our Business Partners

Platinum Sponsor:

HIKVISION

Gold PLUS Sponsor:

ultra FAIRWOOD

◆ A Fairwood Group Company

Gold Sponsors:



HIRSCHMANN

A **BELDEN** BRAND



InterDynamics

Navigating complexity. Delivering clarity.



THERMO KING

Silver Sponsors:

Panasonic



Nomad Digital

One Connection, Infinite Solutions™



Bentley®

Sustaining Infrastructure

21Net

VOITH

Engineered reliability.

Bronze Sponsors:



中国水电
SINOHYDRO

TAPTOPAY

Automatic Fare Collection



天工
TECHGONG



HOPPECKE

POWER FROM INNOVATION

Business Development Sponsor:



DELLNER

Media Partners:



RailPersonnel

Matching people and positions

Wednesday 29th May 2013

0800	Registration and Morning Coffee
0830	Opening and Welcome Remarks from the Chairperson T.C. Chew Project Director MTR Corporation, Hong Kong
0835	Plenary One – Augmenting the Sustainability of Urban Rail Systems to Meet the Need for Improved, Integrated City Travel in Emerging Countries Sim Wee Meng Group Director of Rail Land Transport Authority, Singapore
0915	Plenary Two – Catalysing Alliances between Governments, Rail Operators and the Private Sector to Develop Sustainable Urban Transit for Greater Mobility T.C. Chew Project Director MTR Corporation, Hong Kong
0955	Morning Refreshments
1015	Plenary Three – Devising Effective Project Management Strategies for the Expansion of Major Rail Networks Ian Thoms Project Director Klang-Valley MRT, Malaysia
1055	Plenary Four – Leveraging on Video Surveillance Solutions to Ensure High-Quality Facility Monitoring for Improved Security Derek Yang Director of South-East Asia HIK Vision, China
1135	Plenary Five – Integrating PRT and Rail Operations for Improved Last Mile Mobility in a Thriving City Ranbir Saran Das Managing Director Fairwood Group, Singapore Adam Ruddle Key Account Manager Fairwood Group, Singapore
1215	Lunch Hosted by HIKVISION

STREAM ONE PROJECT PLANNING, ECONOMICS & FINANCING		STREAM TWO OPERATIONS & MAINTENANCE		STREAM THREE SIGNALLING & INNOVATIVE TECHNOLOGIES	
1315	Chairperson's Opening Remarks Azmi Abdul Aziz Chief Development Officer SPAD, Malaysia	1315	Chairperson's Opening Remarks Nigel Holness Operations Director London Underground, United Kingdom	1315	Chairperson's Opening Remarks
1320	Establishing an Effective Policy Framework for Rapidly Expanding Rail Networks in Densely Populated Cities <ul style="list-style-type: none"> Formulating strategies to enhance rail infrastructure development Facilitating the efficient uptake of policy frameworks Putting in place effective strategies to encourage participation from private sector David Yam Head of International Business MTR Corporation, Hong Kong	1320	Operating and Managing an Ageing System for Improved Reliability: A Case Study on SMRT <ul style="list-style-type: none"> Identifying key asset management strategies for operational excellence Maintaining an ageing train system towards improved service quality Leveraging on new methods and technologies to enhance train safety and reliability Ng Wai Yi Deputy Director of Rolling Stock SMRT, Singapore	1320	The Resignalling of Singapore's North-South and East-West Lines <ul style="list-style-type: none"> A case study of the resignalling of Singapore's older lines Identification and evaluation of existing technology Discussing the operational issues and asset replacement programmes in the transition phase Mazeli Bin Salimi Chief Engineer SMRT, Singapore
1400	Designing Multimodal Transport Interchanges to Increase Mobility and Alleviate Congestion in Metropolitan Areas: A Case Study on Bangkok <ul style="list-style-type: none"> Incorporating LRT systems into the existing transport networks for greater connectivity Easing road congestion using comprehensive rail networks to enhance mobility Improving the existing transport layout for better integration Sumit Srisanthum Operations Director Bangkok Mass Transit System, Thailand	1400	Reducing Transportation Project Costs through Industry Best Practices to Deliver Intelligent Infrastructure <ul style="list-style-type: none"> Bridging gaps within asset lifecycle information for optimal project compliance Reducing cost by predictive analysis and asset deterioration forecast for preventive maintenance Leveraging on intelligent engineering information management for better transport infrastructure sustainability Brian Middleton Senior Industry Solutions Director Bentley Systems, Singapore	1400	Acquiring Temperature Control System Solutions for Rail Carriages to Deliver Reliable, Efficient and Clean Operations <ul style="list-style-type: none"> Identifying innovative temperature control systems for lowered costs Benefitting from industry solutions for better profitability Augmenting operational efficiency through temperature control technologies Senior Representative Thermo King, Australia
1440	Afternoon Refreshments	1440	Afternoon Refreshments	1440	Afternoon Refreshments
1500	Empowering Successful Bids for PPP Provision and Maintenance of Rolling Stock Through the Use of Simulation Software <ul style="list-style-type: none"> Utilising simulation to model system performance, maintenance requirements, operational demands and, likely failure points Enabling an understanding of how a complex system behaves dynamically in a way that simple extrapolation of deterministic outcomes cannot Assisting a better evaluation of the alternative capital and operating costs and associated risks Len Pearson Executive Director InterDynamics Pty. Ltd., Australia	1500	Devising Successful Strategies for Railway Operations to Balance Quality, Service and Profitability: A Case Study on Denmark's Metro System <ul style="list-style-type: none"> Implementing corrective and preventive maintenance programmes to maintain high safety standards Executing round-the-clock maintenance operations to minimise disruption, and increase efficiency Enhancing operational cost-efficiency using automated technologies Claudio Cassarino Managing Director Metro Service, Denmark	1500	Integrating 'Moving Block' Communication-Based Train Control (CBTC) Solutions to Optimise Traffic, Enhance Safety and Lower Life-Cycle Costs <ul style="list-style-type: none"> Examining automated and integrated CBTC solutions to augment performance Leveraging on digital radio transmission techniques for better operational excellence Incorporating moving-block technology to achieve optimised train operations Arvind Bhatnagar Executive Director of Signalling & Telecommunication Delhi Metro, India
1540	Formulating Rolling Stock Financing Strategies to Maximise the Returns on Investment in Rolling Stock Procurement <ul style="list-style-type: none"> Exploring funding schemes for rolling stock in developing countries to optimise revenue Evaluating different funding models and their role in supporting upfront funding for acquisition of new vehicles Obtaining procurement support throughout the tendering and delivery of new rolling stock Ismail Said General Manager – Project Management Keretapi Tanah Melayu (KTM) Berhad, Malaysia	1540	Augmenting Assets' Lifecycle by Corrective and Preventive Maintenance Programmes for Improved Safety Standards and Reduced Costs <ul style="list-style-type: none"> Utilising accident prevention tools to evaluate the effectiveness of your safety management system Improving maintenance and repair work safety by reducing track possession time Solving the performance deterioration issues of aging rail systems to increase asset lifecycle <i>Speaker to be Advised</i>	1540	Leveraging on Advancement of Wireless Connectivity to Transport <ul style="list-style-type: none"> Incorporating advanced wireless solutions to allow reliable use of existing networks Introducing the radio communication for round-the-clock monitoring of vehicle Assessing Remote Status Monitoring techniques for enhanced system reliability Dr Spencer Dando Regional Director MEA Nomad Digital Ltd. UAE
1620	Optimising Rail-Route Planning and Design to Enhance Mobility, Improve Interconnectivity and Reduce Costs <ul style="list-style-type: none"> Engineering the routes of new lines to enhance network connectivity Overcoming the environmental challenges in route planning to optimise costs and augment sustainability Analysing planned networks using Geographical Information System (GIS) technology Nguyen Van Quoc Vice Chairman Management Authority for Urban Railways (MAUR), Vietnam	1620	Devising best practices for track condition monitoring to significantly improve the performance and availability of railway assets <ul style="list-style-type: none"> Exploring RAMS Systems performance models for improved performance Examining the best condition-monitoring practices of rail infrastructure assets for enhanced reliability Analysing different monitoring strategies for effective functionality <i>Speaker to be Advised</i>	1620	Transitioning from Single-track to Double-track lines to Improve Travel Time and Line Capacity <ul style="list-style-type: none"> Addressing the issues in refurbishing the current rail infrastructure Upgrading rail services and improving efficiency through electrified double tracks Discovering integrated solutions for cross border transportation using electrified train services Heruwisnu Owipowo Deputy Director of Railway Network Ministry of Transportation, Indonesia
1700	Chairperson's closing remarks & End of Day One	1700	Chairperson's closing remarks & End of Day One	1700	Chairperson's closing remarks & End of Day One

Thursday 30th May 2013

0800	Registration and Morning Coffee
0830	Opening and Welcome Remarks from the Chairperson Claudio Cassarino Managing Director Metro Service, Denmark
0840	Plenary One – Capitalising on Rail Infrastructure Development for Sustainable Mobility and Attracting Investments for a Thriving Economy Azmi Abdul Aziz Chief Development Officer SPAD, Malaysia
0920	Plenary Two – Supporting and Growing London as a world city - London Underground: Past, Present and Future Nigel Holness Operations Director London Underground, United Kingdom
1000	Morning Refreshments
1020	Plenary Three – Realising the full benefits of Communication-based train control (CBTC) in the rail system – A case study of Singapore MRT Ong Boon Ann Deputy Director of Rail Land Transport Authority, Singapore
1100	Plenary Four – Transforming the City's Public Transportation System by Expanding Capacity and Upgrading Existing Infrastructure: A Malaysian Perspective Khairani Mohammad Group Director of Rail Syarikat Prasarana Negara Berhad, Malaysia
1140	Plenary Five – Enhancing Rail Efficiency through State-of-the-Art Traction Technologies and Train Control Systems <i>Speaker to be Advised</i>
1220	Lunch Hosted by ultra FAIRWOOD <small>© 2013 Fairwood Agriculture</small>

STREAM ONE PROJECT PLANNING, ECONOMICS & FINANCING

1300	Chairperson's Opening Remarks Jason Hutchings Director Atkins Global, Hong Kong
1310	Developing an Integrated Urban Railway System and Land Use Policy to Increase Government Capacity to Fund the Infrastructure and Provide Sufficient Land for the Railway System <ul style="list-style-type: none"> Introducing transit oriented development for higher density station development to increase the value capture potentials Harnessing best interface design development to ensure seamless pedestrian flow Minimizing political and social risk through proper planning framework and design Iwan Prijanto Head of Urban Planning and Business Development PT MRT Jakarta
1350	Integrating Rail and Commercial Development through Transit Oriented Developments (TODs) to Increase Access and Encourage the Use of Rail Transport <ul style="list-style-type: none"> Benefitting from TODs to enhance mobility and boost economic activity Building rail infrastructure for greater connectivity and fully leverage on all transport networks Exploring case-studies of rail projects from the UK and China Jason Hutchings Director Atkins Global Hong Kong
1430	Afternoon Refreshments
1450	Capitalising on Public Private Partnerships (PPPs) in Rail Projects to Optimise Cost Structure and Encourage Private Sector Involvement <ul style="list-style-type: none"> Devising strategies for long-term collaboration between the public and private sectors to improve Economies of Scale (EOS) Establishing clear regulations for PPP funding to enable on-time completion of projects Strengthening the capacities of different levels of Government to conceptualise and manage PPPs Yitbarek Mengiste Director of Policy and Research Ministry of Urban Development & Construction, Ethiopia
1530	Developing a Profitable Rail Business through Innovative Non-Fare Activities for Greater Financial Viability <ul style="list-style-type: none"> Strategising effective revenue management to improve the financial viability of metros Incorporating retail, leisure and other commercial facilities for improved customer satisfaction and increased ancillary revenue Redefining station development strategies to raise non-fare revenue and improve affordability Bernard Abeiku Arthur Chief Executive Officer Centre for Urban Transportation, Ghana
1610	Engineering metros using sustainable construction methods for a more eco-friendly mode of transport <ul style="list-style-type: none"> Building an advanced and reliable transit network for greater sustainability Complying with construction standards pertaining to quality and environmental considerations Catalysing environmentally friendly construction technologies for an energy efficient rail system <i>Speaker to be Advised</i>
1700	Chairperson's Closing Remarks & End of Day Two

STREAM TWO OPERATIONS & MAINTENANCE

1300	Chairperson's Opening Remarks Dr. Jia Wenzheng Director of Urban Rail Transit Ministry of Transport, China
1310	Maximising Availability and Reliability of Rail Systems through Asset Upgrades and Maintenance for Increased Operational Excellence <ul style="list-style-type: none"> Using advanced analytics to evaluate the performance of assets for improved efficiency Reducing overhead costs and increasing reliability through automation Mitigating the interference of new systems on existing lines to prevent service disruptions Tsun-Yung Chen Director General Mass Rapid Transit Bureau, Taiwan
1350	Leveraging on Crash Energy Management for Rail Vehicles to Enhance Safety <ul style="list-style-type: none"> Delivering tailor-made system services for safer rail operations Assessing available coupler and impact protection technologies for improved safety standards Ensuring smooth travel through locomotive technology solutions Torsten Lerch Senior Sales Manager Voith Turbo Pte Ltd, Singapore
1430	Afternoon Refreshments
1450	Harnessing Best Practices in Testing and Certification for a Safer, Greener and More Reliable Railway System <ul style="list-style-type: none"> Leveraging on operational technologies to optimise energy-use Combining electricity-powered trains with electrified track infrastructure to improve overall efficiency and total train performance Using polyurethane in the railroad sleepers to enhance infrastructure sustainability Dr. Jia Wenzheng Director of Urban Rail Transit Ministry of Transport, China
1530	Unifying Various Infrastructure Systems Through Station and Depot Management for Improved Incident and Operational Response <ul style="list-style-type: none"> Strategising an effective solution for events and incidents management Incorporating safety, communications and intelligence technologies for a complete incident reaction system Leveraging on event based intelligence such as advanced event correlation and tiered alarm authentication to maximize operational efficiency and productivity Establishing full turnkey management suite including incident handling according to SOPs, system design and proposed implementation Vincent Hong Government Solutions Representative Panasonic Systems Asia Pacific
1610	Optimising Fleet Efficiency Through Reliability-Centred Maintenance (RCM) Practices to Improve Customer Service and Reduce Costs <ul style="list-style-type: none"> Scheduling routine maintenance strategies to minimise downtime Leveraging on RCM maintenance models for increased asset sustainability Leveraging in-depth knowledge on intermodal terminal operating systems and multi-modal transportation management to provide optimal RCM solutions Andrew Jakob Vice President – Customer Service Aurizon, Australia Formerly QR National
1700	Chairperson's Closing Remarks & End of Day Two

STREAM THREE SIGNALLING & INNOVATIVE TECHNOLOGIES

1300	Chairperson's Opening Remarks Claudio Cassarino Managing Director Metro Service, Denmark
1310	Delivering Cutting-Edge Rail Systems and Signalling Solutions to Optimise Train Movement and Route Planning: A Case Study of UAE <ul style="list-style-type: none"> Incorporating versatile signalling and control systems for cost-efficiency and flexibility Adopting modular signalling systems for cost-effective performance Developing automated signalling tools to complement existing services Simon D'Cruz Head of Network Systems Etihad Rail, UAE
1350	Utilising the Latest Tunneling and Underground Space Technologies for Accurate Alignment and Improved Construction Efficiency <ul style="list-style-type: none"> Incorporating Radio Frequency (RF) Communication technologies in tunnelling projects for improved communication Sharing extensive experience in the planning of tunnelling systems for improved construction management Formulating innovative strategies to improve cost-efficiency <i>Speaker to be Advised</i>
1430	Afternoon Refreshments
1450	Using Regenerative Braking Technology that Transfers Energy Back to the Grid for Substantial Cost Savings and Reduced Emissions <ul style="list-style-type: none"> Discovering potential regenerative options for zero recovery time during the braking process Upgrading to Traction Motor Systems to reduce costs Utilising renewable energy solutions to boost operational efficiency Dr Kenji Sato Head of Overseas High Speed Railway Project Central Japan Railway Company
1530	Analysing the Challenges and Optimising Opportunities of Offering Internet and Multimedia on Trains <ul style="list-style-type: none"> Leveraging on multimedia technologies for improved communication Developing train infotainment solutions for enhanced Wi-Fi and cellular connections Sharing experience on the Internet Access System with high bandwidth Internet Jean-François de Lantsheere Deputy Managing Director 21 Nett, Belgium
1610	Streamlining the Ticketing Process Using State-of-the-Art Booking and Ticketing Systems: A Case Study on Egyptian National Railways <ul style="list-style-type: none"> Catalysing yield and revenue management models for better ROI Mitigating challenges for a smooth transition to an integrated ticketing system Assessing the challenges of improving sales in a MENA railway company from manual to electronic ticketing Enrico Trapazzo Vice Chairman Egyptian National Railways, Egypt
1700	Chairperson's Closing Remarks & End of Day Two

Friday 31st May 2013

- 0830 Registration and Morning Coffee
- 0900 Opening and Welcome Remarks from the Chairperson
Agrawal Punit General Manager
Dedicated Freight Corridor Corporation, India
- 0910 **Plenary One – Disaster Prevention and Operation Performance of Taiwan High Speed Rail Corporation (THSRC)**
 - Establishing an integrated and systematic approach to improve asset performance
 - Leveraging on disaster prevention strategies for improved operational excellence
 - Enhancing performance through optimal maintenance strategies**Alex Chang** Chief Operating Officer
Taiwan High Speed Rail Corporation
- 0950 **Plenary Two – Introducing the Japanese High Speed Rail (HSR): The World's Safest and Most Efficient HSR System**
 - Learning from the Japanese model for HSR and thereby adapting it in developing countries
 - Examining the key success factors for HSR programmes in emerging economies
 - Developing cost-efficient maintenance strategies for improved long-term growth**Dr. Tsutomu Morimura** Executive Vice President
Central Japan Railway Company
- 1030 Morning Refreshments
- 1050 **Plenary Three – Upgrading Existing Rolling Stock Technology to Improve Reliability, Speed, and Frequency of Existing Freight Services**
 - Reducing energy consumption through traction technologies to enhance productivity and sustainability
 - Drawing on electrification and power traction distribution systems for greener mobility
 - Proposing advanced auto-diagnostic functionality for enhanced service-quality**Agrawal Punit** General Manager
Dedicated Freight Corridor Corporation, India
- 1130 **Plenary Four – The Development of High Speed Rail; Quality of Services and Technological Management to Build a Secure, Reliable and Efficient System**
 - Leveraging on commercial speed, on-time services and new fleet technology to deliver operational excellence
 - Integrating technologies in rolling stock for improved asset availability and liability
 - Introducing the Renfe Safety System that incorporates risk management for continued efficiency in services*Speaker to be Advised*
- 1210 Networking Lunch
- 1300 **Plenary Five – Reinventing Freight Rail Through Innovation: A Case Study on Transnet Freight Rail**
 - Furthering market development through repositioning, partnering and rebranding
 - Leveraging on sustainable technologies for a greener mode of transport
 - Establishing lean operational approaches for improved cost efficiency**Siyabonga Gama** Chief Executive Officer
Transnet Freight Rail, South Africa
- 1340 **Plenary Six – Strategising Costs, Benefits and Technical Requirements to Achieve Economies of Scale on Freight Projects in Developing Countries**
 - Fostering a collaborative environment between the public and private sector to enable on-time completion of rail projects
 - Encouraging private sector participation to optimise the freight rail development in Cambodia
 - Expediting freight rail corridor development by devising strategies to attract foreign investment**David Kerr** Chief Executive Officer
Toll Royal Railways, Cambodia
- 1420 Afternoon Refreshments
- 1440 **Plenary Seven – Utilising Multi-Standard Signalling Systems for Greater Interoperability and a Technically Unified High Speed Rail Network**
 - Developing technical and design standards to fully integrate systems across different networks
 - Increasing the capability of trains to operate on shared networks
 - Redefining the relationship between interoperability, migration and reliability through technological advancements in signalling systems**Dr Pichet Kunadhamrak** Chief of Intercity Transport Development
Ministry of Transport, Thailand
- 1520 **Plenary Eight – Establishing Round-the-Clock Maintenance for Heavy-Haul Networks to Ensure Train Availability and Safety**
 - Leveraging on maintenance activities that ensure component safety and increased reliability
 - Utilising on-board Automatic Train Protection (ATP) systems for better traffic control and minimal downtime
 - Maximising the availability of trains on heavy-haul tracks operating at full capacity*Speaker to be Advised*
- 1600 Chairperson's Closing Remarks
- 1615 Afternoon Refreshments and End of Day Three

More About the Event

Why you Cannot Miss this Event:

marcus evans takes great pride in organising our **3rd Annual Modern Railways** large scale event scheduled for 29th – 31st May, 2013, in Singapore.

Rail development holds great promise for economic and social progress and the improvement of access to basic services for a greater number of people. There has been an increase in demand for alternative modes of transport other than roads. Many countries in Southeast Asia are investing in transport infrastructure and a forecasted yearly growth of 3.5% is expected, taking the total expenditure to just over US\$32 billion. The Middle East is also investing. The Middle East is also moving forward with new railway projects worth US\$ 110bn. Countries in Africa are also investing in new project funding with other countries to improve their railway system (US\$ 40bn).

Both the private and the public sectors are looking at ways to exchange knowledge, catalyse public-private alliances and regional leaders, thereby assisting them to reach necessary targets. While the concept of urban and freight rail development seems to be a simple solution to growing transport demands, the operation and execution remains complicated due to unclear policy framework.

Attend this event to examine the critical issues in the modern rail industry, explore how this sector can grow in the context of an economic crisis and how to deliver more with less, thereby taking advantage of the unprecedented opportunities in this sector.

Follow your own agenda with a choice of three streams over Day One and Day Two:

Stream I: Project Planning, Economics and Financing

This stream will focus on the different strategies and funds available to actualise new projects upgrade and expand existing networks. Experts from the rail industry will be presenting topics such as effective policy frameworks for rail-expansion, rail-route planning optimisation, cost-reduction, exploring viable finance options.

Stream II: Operations and Maintenance

This stream covers the innovative operations and maintenance strategies that play a key role in improving serviceability in the rail industry. The stream highlights the best practices for condition monitoring, rail system lifespan extension and fleet efficiency optimisation to maximise quality, service and profitability.

Stream III: Signalling and Innovative Technologies

This stream explores technological advancements in the rail industry and the challenges involved in implementing new projects and upgrading existing projects. This stream also discusses establishing an interoperable standard for train control, signalling and traffic management to optimise train movement and route planning for improved construction efficiency and incorporating the Automatic Train Supervision (ATS) system for improved reliability and better performance.

Day 3 – Mainline Day

Day 3 focuses on Mainline, highlighting the major advancements and associated challenges involved in freight rail and high-speed rail, strategic investments in major projects and inter-modal networking. Also, examine the inherent costs and technical requirements to achieve economies of scale on these projects in developing countries.

Geographical Target Market:

- | | |
|-----------------------|-----|
| • South East Asia | 50% |
| • South Asia | 15% |
| • Middle East, Africa | 15% |
| • North and East Asia | 15% |
| • Others | 5% |

Who Should Attend:

This large scale conference is designed to attract all those who are involved in the development of modern railways: **Government Authorities & Ministries Ministers, Director Generals, Secretary Generals, Heads, Officers of:**

- Railways
- Rail Infrastructure (MRTs, LRTs, monorails, metros, subways, tramways, passenger commuters, freight & cargo trains, mainlines, airport rail links, high speed rail)
- Urban Transport
- Traffic Management
- Finance & Public Private Partnerships
- Urban Planning / (Re)development / Rural Development
- City Planning & Town Planning
- Projects & Investments
- Economic Planning & Development
- Construction & Public Works

Engineering & Construction Firms, Contractors & Builders

Chairmen, Presidents, CEOs, MDs, VPs, Directors, GMs and Heads of:

- Planning & Development
- Urban Planning
- Engineering
- Building & Construction
- Land Surveying
- Operations
- Procurement
- Projects & Investments
- Finance
- Sustainability & Energy Efficiency
- Project Management
- Drilling, Tunnelling and Excavating
- Environment and Safety & LEED Certification
- Legal and Compliance
- Building Codes and Assessment

Architecture and Consulting Firms (Network Planning & Station Design)

- Managing Directors / Principals
- Chief Architects
- Landscape Architects
- Heads of Design
- Heads of Urban Planning
- Heads of Transportation
- Heads of Sustainability / Energy Efficiency / Green Building

Rail Operators

Chairmen, Presidents, CEOs, COOs, MDs, VPs, Directors, GMs and Heads of:

- Trains / Rolling Stock
- Commuter Services
- Intercity Services
- Freight Services
- Engineering & Projects
- Communications & Services
- Signalling & Telecommunications
- Business Development & Commercial
- Rail Operations & Maintenance
- Strategy & Finance

Consultants

- Project Management
- Risk Management
- Signalling & Telecommunications
- Safety Engineering
- Environment
- Traffic Management

Legal Firms

Manufacturers and Suppliers of:

- Rolling Stock
- Signalling & Communications Technologies
- Track Engineering and Construction Materials
- Rail Equipment & Parts

Benefits of Attending this Premier **marcus evans** Conference Include:

- **Capitalising** on Asia's rapidly expanding rail market
- **Discovering** the latest signalling, communication, rolling stock, bridges and tunneling, power traction and electrification, track modernisation technologies
- **Benchmarking** with international standards for the rail industry through keynote and case study presentations
- **Learning** planning and development best practices for modern rail infrastructure
- **Designing** an innovative fare collection system to enhance operational efficiencies
- **Gaining** insights on the best financing models for rail infrastructure projects
- **Networking** opportunities with the authorities, international organisations and top industry players

Our Business Partners

Platinum Sponsor:

Hikvision is one of the world's leading suppliers of video surveillance products and solutions. Its product offerings include hybrid DVRs, NVRs, standalone DVRs, digital video servers, high-definition IP cameras, and speed domes. Headquartered in China, Hikvision has expanded to a global operation with regional branch offices in the United States, Netherlands, Italy and Dubai; as well as joint ventures in India and Russia. Rapid growth and exceptional products have seen Hikvision recognized as the No.1 global vendors of CCTV and video surveillance equipment, as well as No.1 worldwide supplier of DVR products for three consecutive years by IMS Research.

Gold PLUS Sponsor:

Ultra is the world leader in Personal Rapid Transit. PRT uses 4-6 seat computer controlled "Pods" to provide first and last mile transport to complement rail and other mass transit. **Ultra Fairwood** designs, manufactures, constructs, commissions and operates PRT systems. Based in Singapore, it is part of the Fairwood Group, a group active in mobility, energy and urbanisation. Ultra Global licenses the technology and provides technical support to Ultra Fairwood. Based in the UK, it designed, developed, and now operates the PRT system at London Heathrow. Ultra Global provides expertise in systems engineering and integration, safety and operations.

Gold Sponsors:

Hirschmann™, a Belden brand supplies Mission Critical Ethernet solutions to the Rail and Transportation Industry. Meeting the extremely rigorous process and quality requirements of IRIS (International Railway Industry Standard) since 2009, it reaffirms our capability as a proven network specialist for highly-available data communication solutions for rolling stock and trackside communications. With the cabling and connectivity product portfolio of Belden and Lumberg Automation™, we have been delivering proven end to end signal transmission solutions for Rail projects throughout the region. We understand the industry and our dedicated team of experts are ready to assist you with your communication requirements.

InterDynamics founded in 1992 with a mission to visualise the way organisations work in a way never before possible, applying human intelligence, interactive software and the highest professional values.

We now work with some of the world's leading names in rail, logistics, mining and manufacturing, providing decision support solutions and fatigue risk management methodologies. Helping organisations plan and schedule their business operations more effectively. Our advanced modelling services and interactive software products guide and inform critical resourcing decisions to ensure that even the most difficult decisions can be taken with confidence.

Thermo King is the global leader in solutions for temperature controlled transport, supplying the world market from 10 production facilities with over 800 distributors globally. Thermo King Rail HVAC sector is an innovative, dynamic business dedicated to providing reliable, premium HVAC units supported by exceptional service globally.

Thermo King HVAC systems range from 2.5Kw up to 70kW suitable for Drivers Cabin and Passenger for Train, Tram and Locomotive applications. Alternatively our team will design to your specific requirements at our 'World Class- Multi Awarded' R&D and manufacturing facility in Czech Republic. For more information on Thermo King's products and services, please visit www.thermoking.com

Silver Sponsors:

Officially established since 1 April 2005, **Panasonic Systems Asia Pacific (PSY)** today is the regional headquarters for integrated systems solutions. As a complete solutions provider, the company has established strong business ties with 3rd party alliances to offer customers "one-stop systems solution integration" in consulting and integration system application development. For Modern Rail industry, PSY leverages on innovative technologies to build an extensive coverage of security, communications and other information system solutions that suit the needs of the customers.

Nomad Digital is the established global leader in the provision of IP based communication solutions to the transportation sector. Innovation is central to the Nomad philosophy and we have continually delivered market leading solutions since deployment of the world's first genuine broadband passenger WiFi service in 2004. The Nomad vision is "One Connection Infinite Solutions". This is achieved through a single communications platform whose open functionally-rich architecture provides a future proofed technology base. Whether your interest is passenger, operational or infrastructural solutions, Nomad can develop a customised solution to enrich your business.

Bentley is the global leader dedicated to providing architects, engineers, geospatial professionals, constructors, and owner-operators with comprehensive software solutions for sustaining infrastructure. Its solutions encompass the MicroStation platform for infrastructure design and modeling, the ProjectWise platform for infrastructure project team collaboration and work sharing, and the AssetWise platform for infrastructure asset operations – all supporting a broad portfolio of interoperable applications and complemented by worldwide professional services. In terms of sustaining transportation infrastructure – from design, engineering, and construction to operations and rehabilitation – only Bentley has the breadth of offerings to empower transportation professionals to go wherever their projects take them. URL: www.bentley.com

Silver Sponsors:

21Net was set up with the sole objective to offer high speed Internet access and multimedia services on board trains, essentially through broadband channels provided by a combination of two-way satellite, Wi-Fi and cellular connections. As such, 21Net has become the leading provider of Internet and Infotainment on board High Speed trains combining both cellular and satellite technologies. Besides providing the satellite connection for the Thalys fleet, 21Net has developed and tested full on train infotainment solutions with functionalities like Video on Demand, IPTV based on a Gigabit network on the 25 High Speed Trains of NTV. The 21Net Internet access system is based on the proposition that since users are familiar with high bandwidth Internet, only a similar type of experience could be successfully offered on board a high speed train.

Quality and safety – these are the attributes associated with **Voith Turbo Scharfenberg**. In 1903, Karl Scharfenberg invented the first automatic train coupler. Continuous technical refinements have made the "Schaku" one of the most prominent railway coupler systems all over the world. Today, Scharfenberg system solutions cover the whole range of energy absorbing components for train front ends. A considerable number of trains, especially in the high speed sector, are fitted with complete Scharfenberg front end systems. The latest development, the GFRP vehicle head Galea®, serves as test bed for innovative technologies. All products have one thing in common: its focus on the safety of passengers and train.

Bronze Sponsors:

SINOHYDRO, well-known as "China's first brand in hydropower construction", has always been active and famous in the global hydropower and infrastructure construction sectors. Founded in the early 1950s, Sinohydro is a large central State Owned Enterprise with more than 130,000 employees worldwide. After half century's development, Sinohydro has become a large diversified corporation group actively in engineering, construction and consulting/supervising services on power, railway, mass rapid transit and road/highway projects, and power investment, real estate development etc.. The recent years witness a rapid growth of Sinohydro in business revenue and total assets volume as well as structure diversification. As now, its total asset is over RMB 120 billion Yuan, and owns 19 wholly-owned subsidiaries and 9 holding companies in Mainland China. After two decades' expansion, Sinohydro has built up a complete international marketing network, founded 71 oversea branches/representative offices in about 55 countries and regions in Asia, Africa, East Europe, Oceania and South America.

TaptoPay, a wholly owned subsidiary within Advanced Card Systems (SEHK:8210), is specialized in designing, developing and implementing Automatic Fare Collection solutions. TaptoPay provides a total AFC solution, including hardware, frontend applications, key management system and backend system. Advanced Card Systems Limited, is Asia Pacific's top supplier and one of the world's top 3 suppliers of PC-linked smart card readers and distributes to over 100 countries around the globe.

Shield cutters, TBM cutters, matching advanced Tunnel Boring Machines of different types, are mainly used in metro and tunnel construction. **Techgong** shield cutters have played an important role in metro construction. Techgong products mainly include: Roller disc cutter, cutting tools, antecedent cutter, Center disc cutter, Protector for headcutter, and copying cutters, etc.

Customer-made energy system solutions, batteries and cells in lead-acid, FNC® (fibre structure nickel), Nickel-Metal-Hydride, Li-Ion technology, state-of-the-art charging technology, monitoring, battery charging stations with battery changing systems **HOPPECKE** is your business partner for efficient railway battery systems ready to meet the demands of the future, today. We are setting new and higher standards for the energy supply systems of tomorrow and are already world leaders in the integration of battery systems for rail vehicles.

Business Development Sponsor:

Dellner's reputation is based on INNOVATIVE RESEARCH and advanced design. In the past half century we have introduced SEVERAL GLOBAL BREAKTHROUGHS in the rail industry, including gas hydraulic draft gears, automatic retractable couplers and advanced energy absorption management systems. Dellner is a niche company serving a large worldwide industry with products like couplers, gang-ways and dampers. In the total train build up, our train connection systems contribute a highly safety and operational critical function. The company's unique product portfolio enables complete front end as well as intermediate car systems solutions supported by world class after sales services.

Media Partners:

Construction Management Guide (CMGUIDE) is a UAE-based online service and knowledge portal focusing on developing skills and enriching the knowledge of the construction industry's practitioners. Founded in 2008, CMGUIDE has been online for three years offering free consultation services and delivering specialized materials in project management and contract administration to thousands of construction practitioners worldwide. More than 5000 subscribers have joined CMGUIDE benefiting from the free newsletters. CMGUIDE has achieved an excellent popularity and reputation among the professionals in the industry in a very short time. Hence, it was selected as a basic Media Partner for many construction conferences and events.

RailPersonnel is an internationally recognised recruitment specialist with a solid reputation in the rail industry worldwide for finding clients the people they need. We are committed to matching people and positions by making it easier for people to see what jobs are on offer and to apply with confidentiality.